



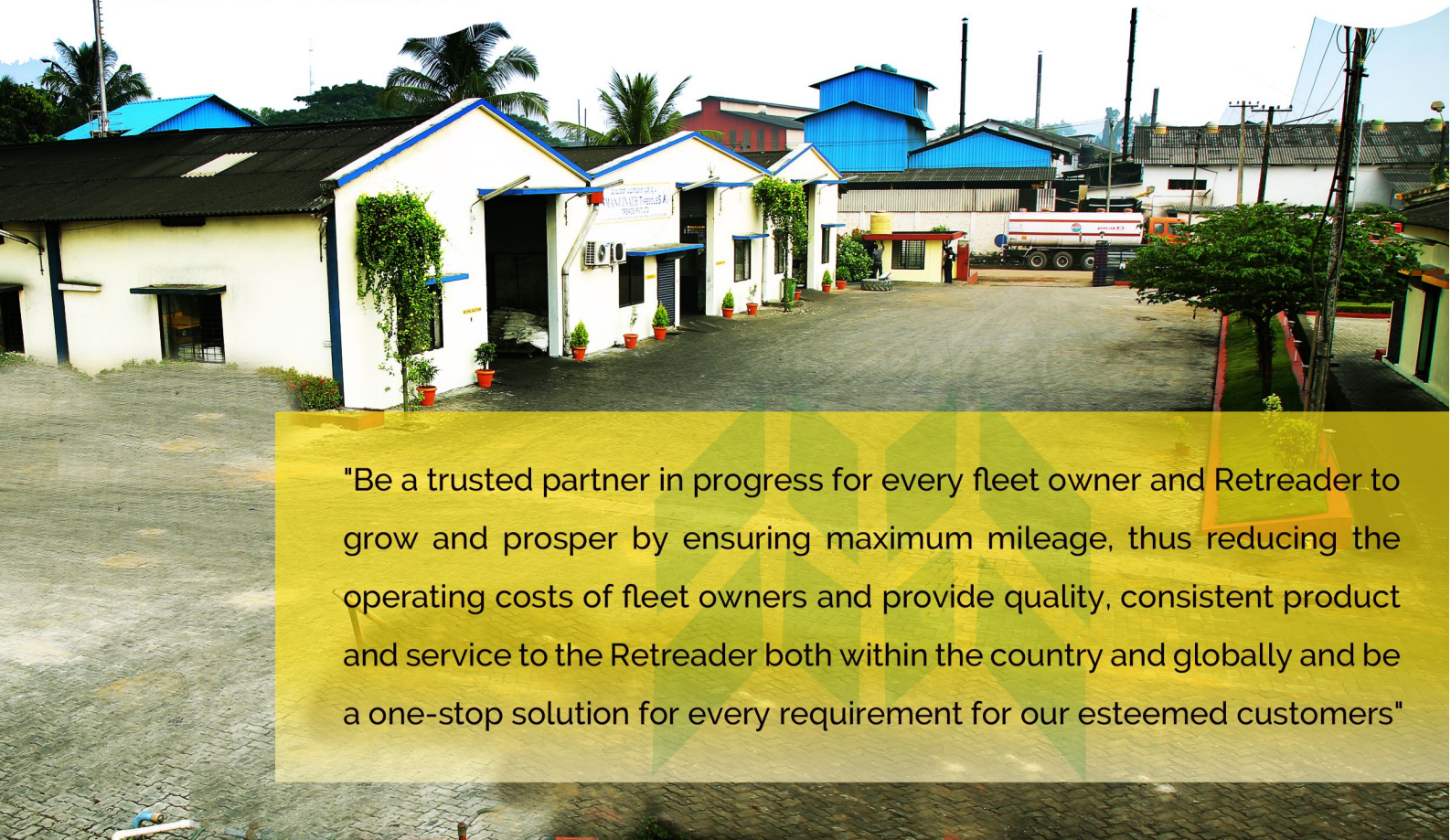
INTRODUCTION

Manjunath Rubber is a professionally managed company that was founded in 1984. We are a technologically driven industry that has been developing new and tested formulations to suit the specific requirements of the tyres used for various applications.

Our team has Competent Rubber Technologists, Quality Experts, Product Development Managers, Production Supervisors and Many More Supplementary Professionals to ensure that we provide only the best product and service to our customers.

Our team is proud for its Trustworthy, Ethical Behaviour and Quality of Product which has helped us develop into one of the fastest growing companies in the tread rubber industry in the region.

OUR VISION



"Be a trusted partner in progress for every fleet owner and Retreader to grow and prosper by ensuring maximum mileage, thus reducing the operating costs of fleet owners and provide quality, consistent product and service to the Retreader both within the country and globally and be a one-stop solution for every requirement for our esteemed customers"



RESEARCH AND DEVELOPMENT

To ensure that the vision of our company is realised, we have made huge investments in the field of Research and Development to ensure that the consistency and quality of our product remains identical with every batch that is manufactured in our plant.

The lab is also used to develop new formulations that is required to suit and meet the precise requirements of the customers. The Research and Development facility has also given us the independence to access the best testing equipment to help us develop new technologies, improve our product and also test and control the quality of our existing range.

CONVENTIONAL TREAD RUBBER



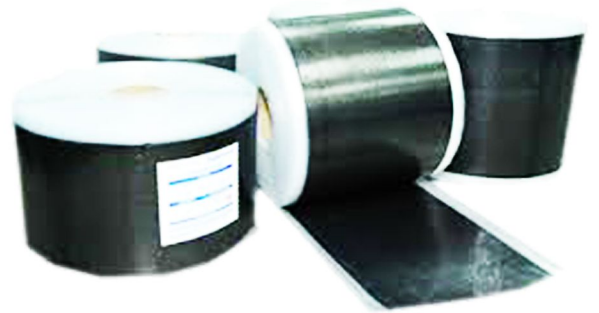
Available for varying applications such as Truck/Bus, OTR and Tractor Application in customer specified sizes. The sizes vary from bike tyres to massive dumper tyres. We are currently offering three variants of conventional rubber under the brand of '**TITANIUM, POLYGOLD and POLYMER**'. All products have increased scorch safety so as to maximize the shelf life of the compound.

BVC- BLACK VULCANISING CEMENT



BVC is a dispersion solution of highly tacky rubber compound dissolved in an appropriate solvent. BVC has a longer shelf life, higher scorch safety and better tack. Available as Ready to Use, Thick and Thin Solution suitable for both Conventional and Precured Process.

CUSHION GUM / UTS - UNDER TREAD STRIPS



UTS is also known as under the tread strips that is used during conventional remoulding process. It is used for filling and adding extra rubber due to injury or additional wear and tear of the tyre.

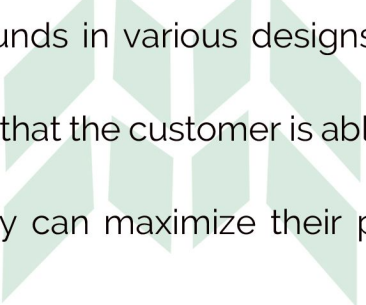
BONDING GUM



Perfected through innovation and research that guarantees the finest bonding and tackiness. Use of the finest Natural Rubber and Multi-Stage Processing ensures the finest product with unmatched quality. The product is developed to have a curing temperature at 125° Celsius. Please note that Bonding Gum (Fast Cure) with curing temperature at 99° Celsius also available. Kindly Contact Us if you require such product. Suitable for both hot and cold climates.



PRECURED RUBBER



We offer high mileage compounds in various designs and sizes for both bias and radial tyres. We strive to ensure that the customer is able achieve the lowest possible cost per kilometre, so that they can maximize their profits. Kindly enquire for the various qualities that is on offer.

JET TRACK
BIAS (LUG)



| TYRE SIZE | BASE WIDTH (MM) | NSD (MM) | BASE RUBBER (MM) | LENGTH (INCH) | APPROX WEIGHT (KG) |
|-----------|-----------------|----------|------------------|---------------|--------------------|
| 7.00X15 | 150 | 12.0 | 3.0 | 99” | 5.400 |
| 7.50X16 | 160 | 11.0 | 4.0 | 99” | 5.700 |
| 8.25X16 | 170 | 13.0 | 3.0 | 104” | 6.800 |
| 8.25X20 | 170 | 13.0 | 3.0 | 118” | 7.800 |
| 9.00X20 | 187 | 15.0 | 3.5 | 125” | 10.500 |
| 9.00X20 | 195 | 15.0 | 3.5 | 125” | 10.800 |
| 10.00X20 | 205 | 13.5 | 3.5 | 127” | 11.100 |
| 10.00X20 | 205 | 14.0 | 3.0 | 127” | 11.500 |
| 10.00X20 | 215 | 13.5 | 3.0 | 127” | 11.100 |
| 10.00X20 | 215 | 14.0 | 4.0 | 127” | 11.600 |
| 10.00X20 | 215 | 15.0 | 4.0 | 127” | 12.200 |

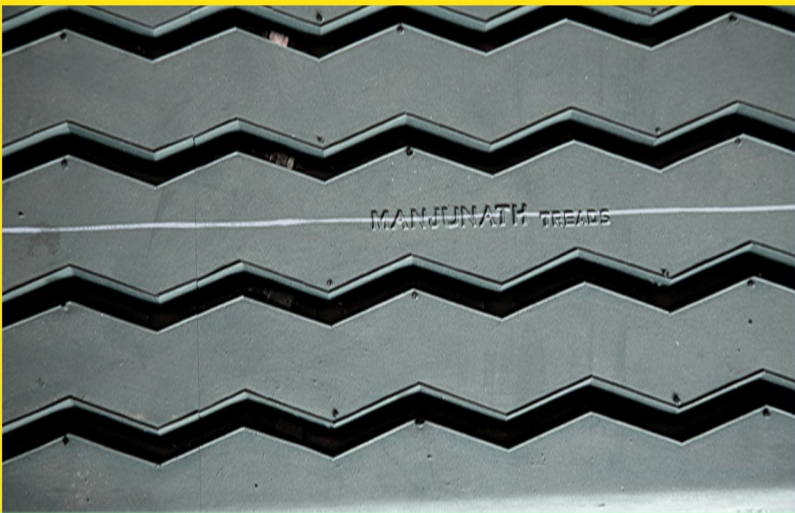
XB
BIAS (LUG)



| TYRE SIZE | BASE WIDTH (MM) | NSD (MM) | BASE RUBBER (MM) | LENGTH (INCH) | APPROX WEIGHT (KG) |
|-----------|-----------------|----------|------------------|---------------|--------------------|
| 7.00X15 | 150 | 13.0 | 3.0 | 99” | 5.600 |
| 8.25X16 | 170 | 13.5 | 3.0 | 104” | 7.100 |
| 8.25X20 | 170 | 13.5 | 3.0 | 118” | 8.200 |
| 9.00X20 | 187 | 15.0 | 3.5 | 124” | 10.500 |
| 9.00X20 | 195 | 15.0 | 3.0 | 124” | 10.900 |
| 10.00X20 | 205 | 12.0 | 4.0 | 128” | 10.800 |
| 10.00X20 | 205 | 14.5 | 3.5 | 128” | 11.000 |
| 10.00X20 | 205 | 15.0 | 3.5 | 128” | 11.500 |
| 10.00X20 | 210 | 15.0 | 3.5 | 128” | 12.000 |
| 10.00X20 | 215 | 14.5 | 3.5 | 128” | 11.800 |
| 10.00X20 | 215 | 14.5 | 3.5 | 128” | 12.000 |

AJAX

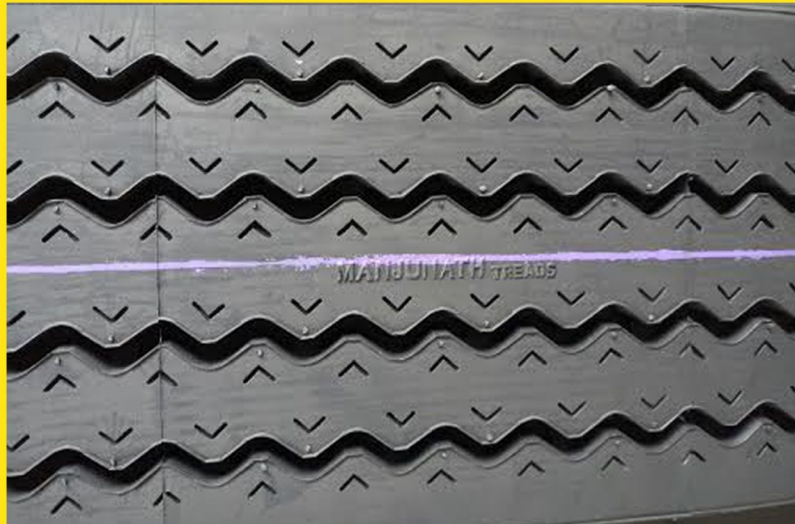
BIAS (RIB)



| TYRE SIZE | BASE WIDTH (MM) | NSD (MM) | BASE RUBBER (MM) | LENGTH (INCH) | APPROX WEIGHT (KG) |
|-----------|-----------------|----------|------------------|---------------|--------------------|
| 10.00X20 | 205 | 12.0 | 3.5 | 127" | 10.200 |
| 10.00X20 | 215 | 13.5 | 3.5 | 127" | 11.900 |

M-RIB

BIAS (RIB)



| TYRE SIZE | BASE WIDTH (MM) | NSD (MM) | BASE RUBBER (MM) | LENGTH (INCH) | APPROX WEIGHT (KG) |
|-----------|-----------------|----------|------------------|---------------|--------------------|
| 8.25X16 | 171 | 13.5 | 3.0 | 104" | 7.000 |
| 8.25X20 | 171 | 13.5 | 3.0 | 118" | 8.000 |
| 10.00X20 | 205 | 13.0 | 3.5 | 128" | 11.000 |



CHALLENGER

BIAS (RIB)



| TYRE SIZE | BASE WIDTH (MM) | NSD (MM) | BASE RUBBER (MM) | LENGTH (INCH) | APPROX WEIGHT (KG) |
|-------------------|-----------------------|-------------|------------------------|------------------|--------------------------|
| 6.00X16 | 120 | 12.0 | 3.0 | 93" | 4.000 |
| 6.00X16 | 130 | 11.0 | 3.0 | 93" | 4.000 |
| 7.00X16 | 140 | 11.0 | 3.0 | 70" | 5.000 |
| 7.50X16 | 150 | 10.0 | 4.0 | 99" | 5.200 |
| 7.50X16 | 155 | 12.0 | 3.0 | 99" | 5.400 |
| 7.50X16 | 160 | 13.0 | 3.0 | 99" | 5.500 |
| 8.25X16 | 170 | 13.5 | 3.0 | 104" | 7.000 |
| 8.25X20 | 170 | 13.5 | 3.0 | 118" | 8.100 |
| 9.00X20 | 180 | 13.5 | 3.0 | 124" | 9.100 |
| 9.00X20 (LNSD) | 185 | 12.0 | 3.0 | 124" | 8.000 |
| 9.00X20 | 185 | 13.5 | 3.0 | 124" | 9.400 |
| 9.00X20 | 187 | 13.5 | 3.0 | 124" | 9.700 |
| 9.00X20 | 195 | 14.0 | 3.0 | 124" | 9.800 |
| 10.00X20 | 205 | 13.5 | 3.0 | 127" | 10.600 |
| 10.00X20 | 205 | 14.0 | 3.5 | 127" | 11.100 |
| 10.00X20 | 215 | 13.5 | 3.0 | 127" | 10.900 |
| 10.00X20 | 215 | 14.5 | 4.0 | 127" | 11.300 |

ROADSTER

BIAS (SEMI LUG)



| TYRE SIZE | BASE WIDTH (MM) | NSD (MM) | BASE RUBBER (MM) | LENGTH (INCH) | APPROX WEIGHT (KG) |
|-----------|-----------------|----------|------------------|---------------|--------------------|
| 7.50X16 | 160 | 12.0 | 3.0 | 99" | 5.900 |
| 9.00X20 | 185 | 13.5 | 3.0 | 125" | 9.500 |
| 9.00X20 | 195 | 13.5 | 3.0 | 125" | 10.200 |
| 10.00X20 | 205 | 14.0 | 3.5 | 128" | 11.000 |
| 10.00X20 | 215 | 13.0 | 3.5 | 128" | 11.500 |

SEMI LUG

BIAS (SEMI LUG)



| TYRE SIZE | BASE WIDTH (MM) | NSD (MM) | BASE RUBBER (MM) | LENGTH (INCH) | APPROX WEIGHT (KG) |
|-----------|-----------------|----------|------------------|---------------|--------------------|
| 10.00X20 | 205 | 12.5 | 3.5 | 127" | 10.400 |

Z LUG

BIAS (SEMI LUG)



| TYRE SIZE | BASE WIDTH (MM) | NSD (MM) | BASE RUBBER (MM) | LENGTH (INCH) | APPROX WEIGHT (KG) |
|-----------|-----------------|----------|------------------|---------------|--------------------|
| 10.00X20 | 205 | 14.0 | 3.0 | 127" | 10.700 |

LM4

RADIAL



| TYRE SIZE | BASE WIDTH (MM) | NSD (MM) | BASE RUBBER (MM) | LENGTH (INCH) | APPROX WEIGHT (KG) |
|-----------|-----------------|----------|------------------|---------------|--------------------|
| 10.00X20 | 210 | 13.5 | 3.5 | 128" | 11.000 |

MAXIMUS

RADIAL



| TYRE SIZE | BASE WIDTH (MM) | NSD (MM) | BASE RUBBER (MM) | LENGTH (INCH) | APPROX WEIGHT (KG) |
|-----------|-----------------|----------|------------------|---------------|--------------------|
| 10.00X20 | 220 | 14.0 | 3.5 | 128" | 11.500 |

CALIBRE

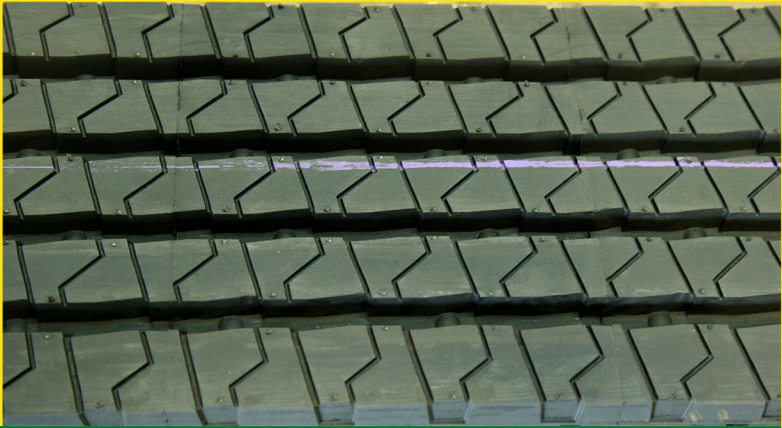
RADIAL



| TYRE SIZE | BASE WIDTH (MM) | NSD (MM) | BASE RUBBER (MM) | LENGTH (INCH) | APPROX WEIGHT (KG) |
|-----------|-----------------|----------|------------------|---------------|--------------------|
| 10.00X20 | 210 | 14.0 | 3.5 | 128" | 11.600 |
| 10.00X20 | 220 | 14.0 | 3.5 | 128" | 12.100 |

STRIDE

RADIAL



| TYRE SIZE | BASE WIDTH (MM) | NSD (MM) | BASE RUBBER (MM) | LENGTH (INCH) | APPROX WEIGHT (KG) |
|-----------|-----------------|----------|------------------|---------------|--------------------|
| 10.00X20 | 210 | 14.0 | 3.5 | 128" | 11.000 |
| 10.00X20 | 220 | 13.5 | 3.0 | 128" | 11.500 |

SM10

RADIAL

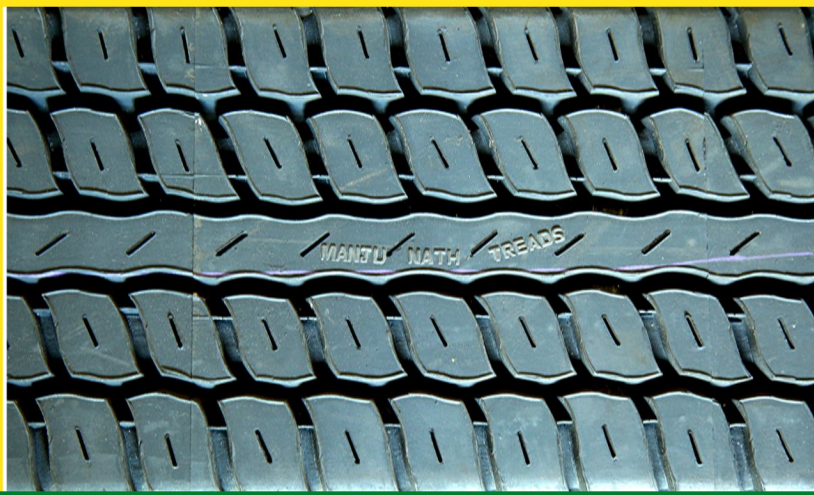


| TYRE SIZE | BASE WIDTH (MM) | NSD (MM) | BASE RUBBER (MM) | LENGTH (INCH) | APPROX WEIGHT (KG) |
|-----------|-----------------|----------|------------------|---------------|--------------------|
| 10.00X20 | 210 | 13.5 | 3.0 | 128" | 10.900 |



ASTRO

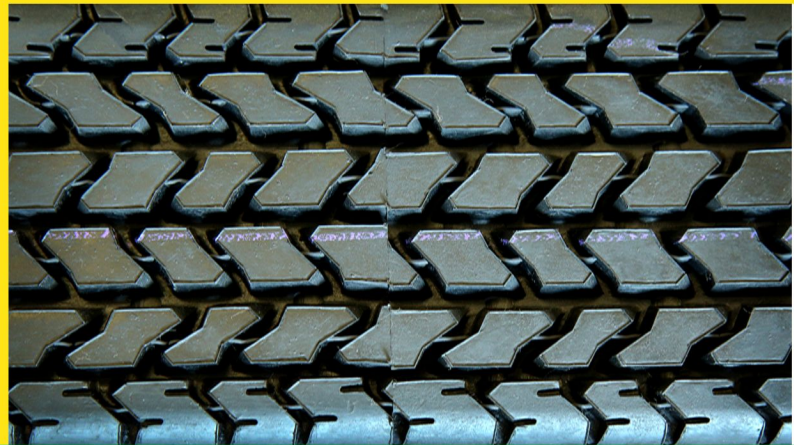
RADIAL(CAR)



| BASE WIDTH (MM) | NSD (MM) | BASE RUBBER (MM) | LENGTH (INCH) | APPROX WEIGHT (KG) |
|-----------------|----------|------------------|---------------|--------------------|
| 175 | 12.0 | 3.0 | 87" | 5.700 |

MPR

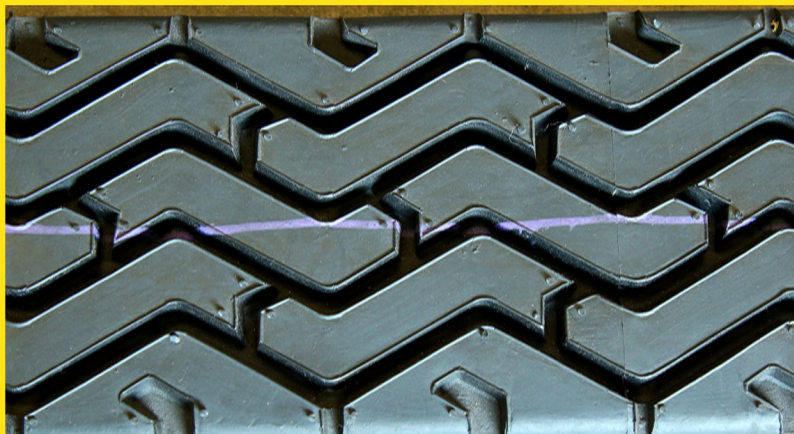
RADIAL(CAR)



| BASE WIDTH (MM) | NSD (MM) | BASE RUBBER (MM) | LENGTH (INCH) | APPROX WEIGHT (KG) |
|-----------------|----------|------------------|---------------|--------------------|
| 130 | 10.0 | 3.0 | 90" | 3.800 |
| 140 | 12.0 | 4.0 | 97" | 4.150 |
| 160 | 10.0 | 4.0 | 88" | 4.300 |

ROVER

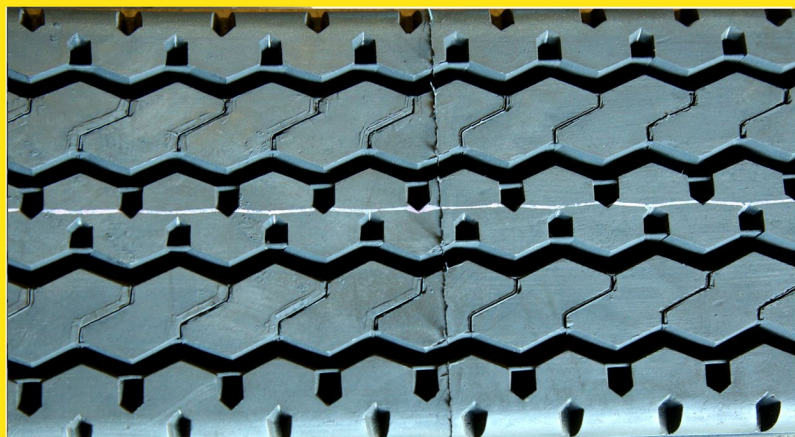
RADIAL(CAR)



| BASE WIDTH (MM) | NSD (MM) | BASE RUBBER (MM) | LENGTH (INCH) | APPROX WEIGHT (KG) |
|-----------------|----------|------------------|---------------|--------------------|
| 132 | 11.0 | 3.5 | 90 | 4.100 |

CT

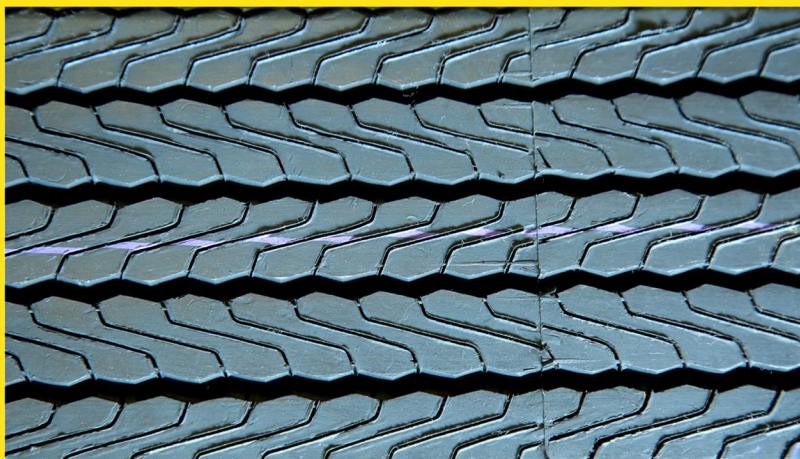
RADIAL(CAR)



| BASE WIDTH (MM) | NSD (MM) | BASE RUBBER (MM) | LENGTH (INCH) | APPROX WEIGHT (KG) |
|-----------------|----------|------------------|---------------|--------------------|
| 100 | 9.00 | 3.50 | 68" | 3.200 |
| 110 | 9.00 | 3.50 | 68" | 3.600 |
| 130 | 12.0 | 3.00 | 95" | 4.500 |
| 140 | 12.0 | 3.00 | 92" | 5.000 |
| 150 | 11.0 | 3.50 | 98" | 5.700 |

PT

RADIAL(CAR)



| BASE WIDTH (MM) | NSD (MM) | BASE RUBBER (MM) | LENGTH (INCH) | APPROX WEIGHT (KG) |
|-----------------|----------|------------------|---------------|--------------------|
| 90 | 8.0 | 2.5 | 130" | 3.100 |
| 95 | 8.0 | 2.5 | 127" | 3.100 |
| 105 | 8.0 | 2.5 | 129" | 4.000 |
| 110 | 8.0 | 2.5 | 129" | 4.000 |
| 115 | 8.0 | 2.5 | 129" | 4.000 |





MANJUNATH



Phone: +91 824 2409475



Mobile: +91 9972619475

MILEAGE THROUGH INNOVATION



393 B2, Baikampady
Industrial Area,

New Mangalore- 575011



www.manjunathrubber.in



MANJUNATH



THE SMART CHOICE